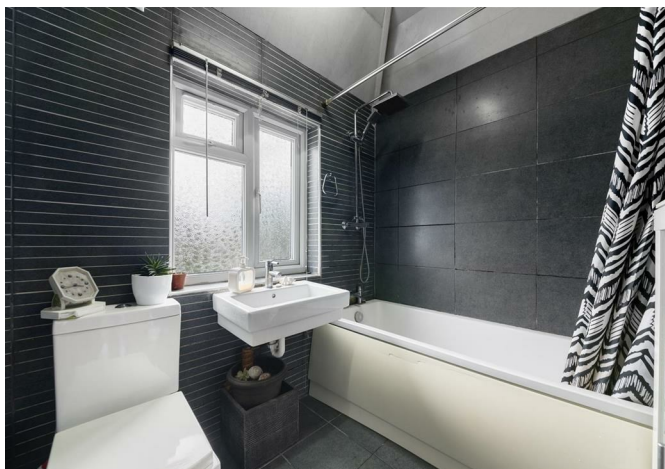


ALLDAY
& MILLER



Kingsway, Hayes, UB3 2TT
£540,000

 3  1  1  D



Kingsway, Hayes, UB3 2TT

£540,000

- Semi-Detached House
- Separate Annexe
- Driveway
- Close To The Uxbridge Road
- Freehold
- Large Through Lounge
- Potential To Extend STPP
- Great Transport Links

Description

Available to the market is this three bedroom semi-detached home with a separate annexe to the rear of the garden.

This accommodation offers great potential and comprises of a welcoming entrance porch, bright and spacious reception room flowing into the conservatory which overlooks and provides access to the rear garden, fitted kitchen to finish the ground floor.

Rising to the first floor enjoys three bedrooms and a family bathroom.

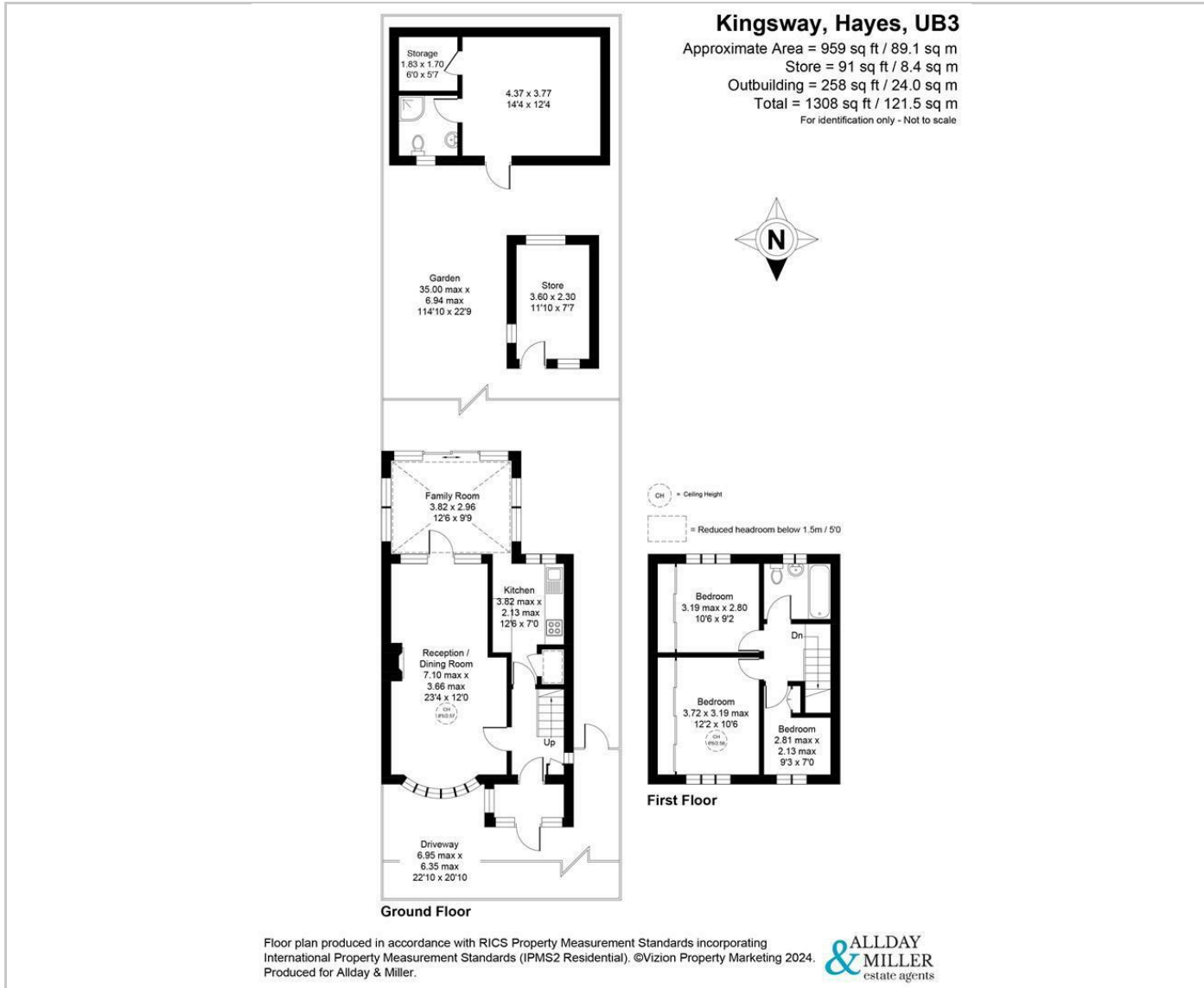
The front of the property with a driveway benefiting from off road parking. To the rear enjoys a private garden with a storage room and outbuilding with a shower room.

Situation

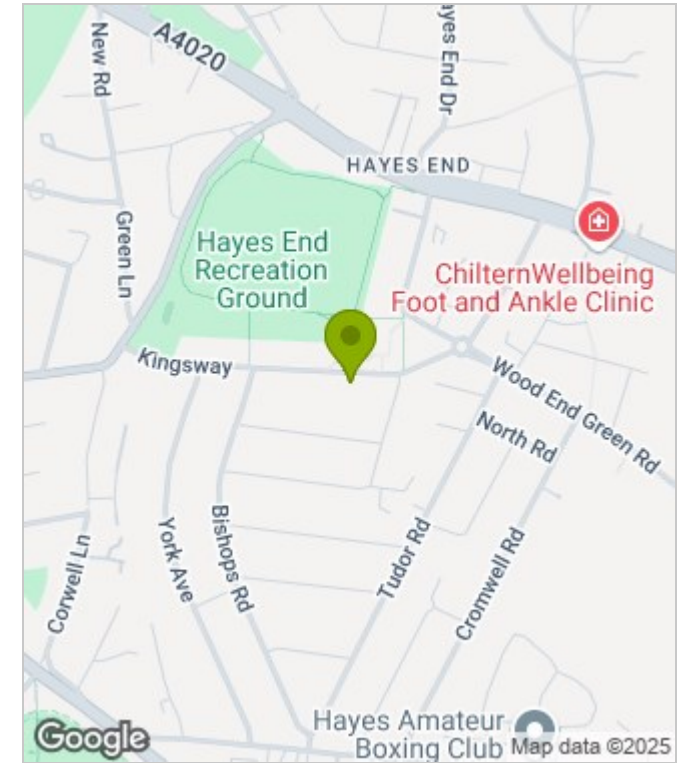
Kingway is situated within a short stroll of Uxbridge Town Centre and all its amenities, including The Chimes and The Pavillions shopping malls, a number of highly regarded restaurants and bars, along with its Metropolitan/Piccadilly line station. Brunel University, Hillingdon Hospital and well-regarded schools are all within easy reach, along with the Elizabeth line, Central line and mainline rail services. The M25/M40 and A40 with their direct links to London and the home counties are just a short drive away. Heathrow airport is within easy reach by car or public transport.



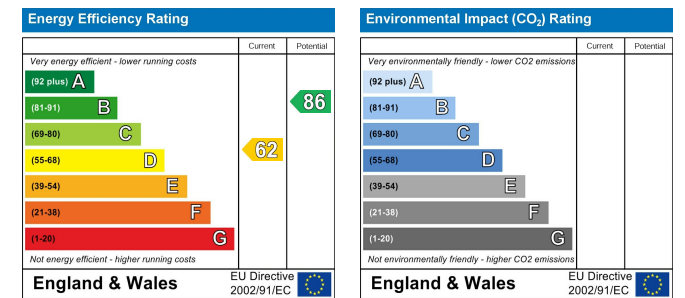
Floor Plans



Area Map



Energy Performance Graph



These particulars, whilst believed to be accurate are set out as a general outline only for guidance and do not constitute any part of an offer or contract. Intending purchasers should not rely on them as statements of representation of fact, but must satisfy themselves by inspection or otherwise as to their accuracy. No person in this firm's employment has the authority to make or give any representation or warranty in respect of the property.